

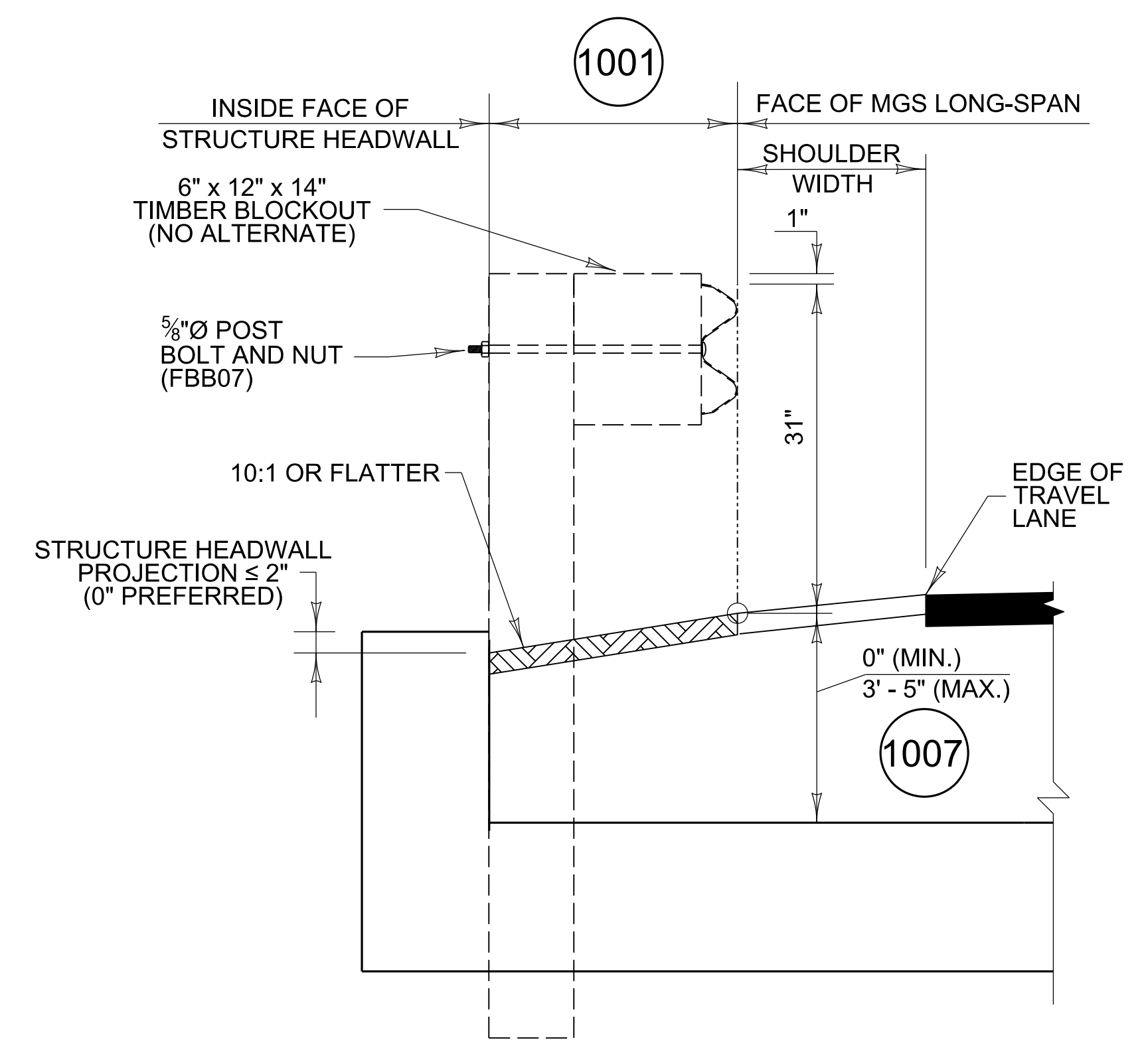
MGS LONG SPAN (3 POSTS OMITTED)* — ELEVATION

* MGS LONG SPAN 3-POST PLAN DETAILS ARE SHOWN ON RBR-200, SHEET 9.

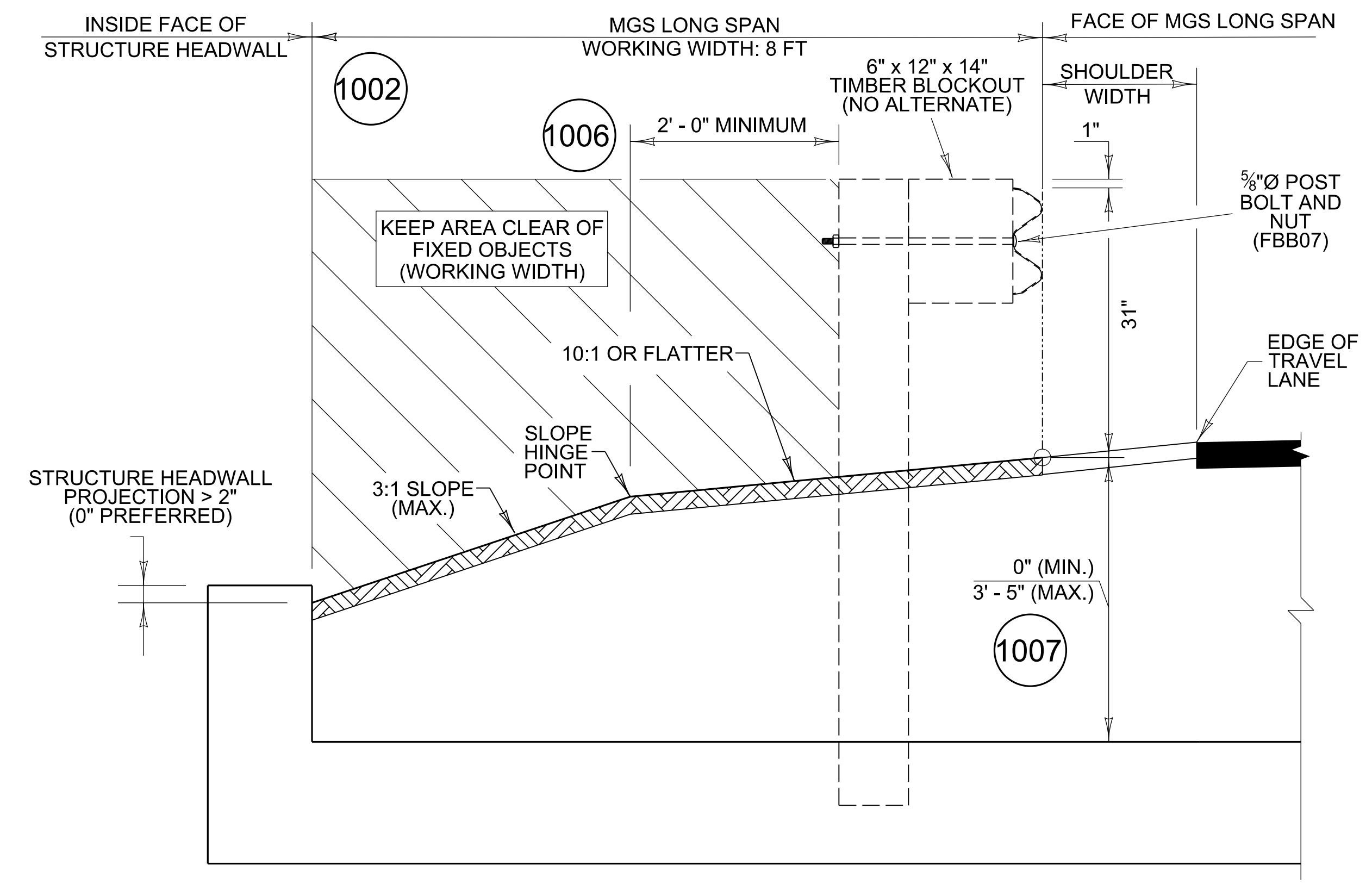
**SEE RBR-200, SHEET 09 FOR SECTION A - A.

~ NOTES ~

- 1001 WHERE THE STRUCTURE HEADWALL PROJECTS TWO (2) INCHES OR LESS ABOVE GRADE, POSITION THE BACK OF THE CRT POST NO FARTHER BACK THAN FLUSH WITH THE HEADWALL FACE.
- 1002 WHEN THE STRUCTURE HEADWALL PROJECTION IS GREATER THAN TWO (2) INCHES ABOVE GRADE, LOCATE THE INSIDE FACE OF THE HEADWALL 8 FT FROM THE FACE OF MGS LONG SPAN.
- 1003 FOLLOW ALL NOTES ON RBR-200, SHEET 9. CIRCLED NOTES ARE REPEATED BELOW FOR REFERENCE.
- 1004 PROVIDE A MINIMUM OF 25'-0" OF MGS W-BEAM GUARDRAIL BETWEEN CRT POST 3 AND THE BEGINNING OF ANY OF THE FOLLOWING:
 - TYPE 1 END TREATMENT (POST 1, RBR-020)
 - THRIE-BEAM GUARDRAIL TRANSITION (PAY LIMIT, BHS-013 AND BHS-014)
 - QUARTER-POST SPACING (RBR-200, SHEET 2, NOTE 209)
- 1005 PROVIDE A MINIMUM OF 62'-6" OF MGS W-BEAM GUARDRAIL BETWEEN CRT POST 3 AND THE BEGINNING OF ANY OF THE FOLLOWING:
 - TYPE 3 END TREATMENT WHERE FLARING STARTS, RBR-030)
 - TYPE 4A END TREATMENT (PAY LIMIT, RBR-035)
 - ANY FLARED GUARDRAIL
- 1006 PROVIDE A MINIMUM 2'-0" HORIZONTAL WIDTH OF EMBANKMENT BEHIND CRT POSTS TO THE SLOPE HINGE POINT FOR 3:1 OR FLATTER SLOPES.
- 1007 WHEN THE FILL HEIGHT, MEASURED AT THE FACE OF RAIL FROM THE TOP OF SHOULDER TO THE TOP OF CULVERT, EXCEEDS 3'-5", USE THE STANDARD MGS INSTALLATION (RBR-200, SHEET 1).



SECTION B - B
 STRUCTURE HEADWALL PROJECTION ≤ 2"



SECTION B - B
 STRUCTURE HEADWALL PROJECTION > 2"

BARRIERS